

Lehigh ADVANCE Center for Women STEM Faculty

LU-WISE Faculty Lunch

September 6, 2018

UC409

Developed and Supported by:

Office of the Provost

Lehigh ADVANCE Center for Women STEM Faculty

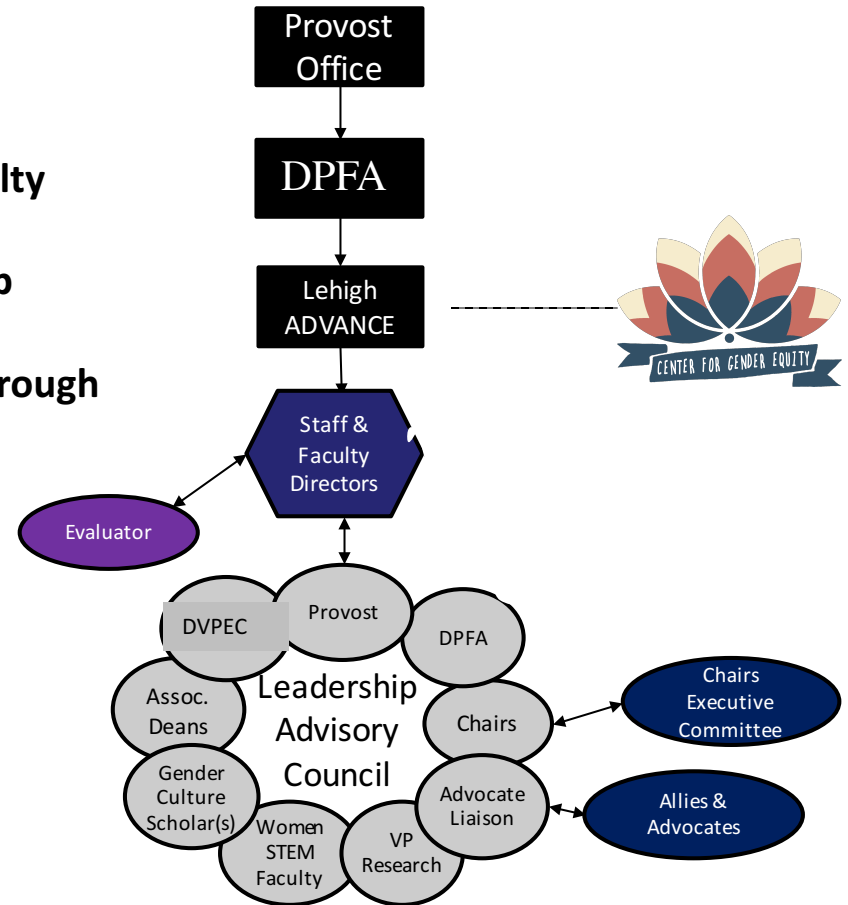
advance | ADVANCING WOMEN IN
SCIENCE & ENGINEERING
AT LEHIGH UNIVERSITY



- Introductions
- About ADVANCE & Resources
- Semester Goals and Planning Discussion

Organizational Structure and Goals: ADVANCE is Part of the Provost Office

1. Recruit & Hire more women
2. ADVANCE Women
 - Foster a supportive and inclusive climate for faculty success and retention
 - Provide professional development and leadership opportunities for women faculty
 - Advance the careers of women (STEM) faculty through improved mentoring, networking, and clear and equitable evaluation criteria and procedures.
3. New Research and Dissemination
4. Seek new funding
5. Celebrate Success
6. Monitor & Evaluate



Lehigh ADVANCE Programming: Multiple Impacts from Layered Initiatives

LU-WISE & Grants

Mentoring

Department Climate

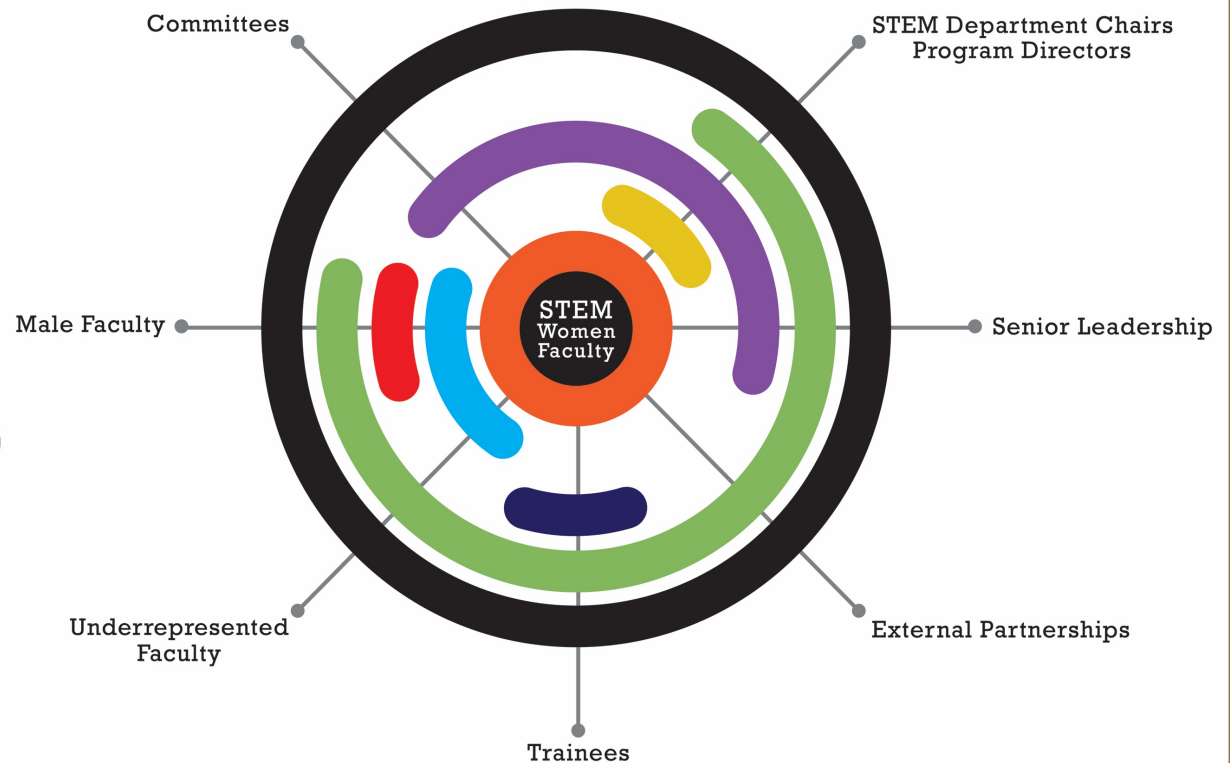
Post-Doctoral Support

Male Allies & Advocates

Implicit Bias & Best Practice Training

Professional Development

Evaluation



2017-2018 ADVANCE Center Programs

- Search Committee Education (University, by college and as needed)
- Mentoring
 - INC paired team (new faculty)
 - Associate Professors
 - University mentoring committee
 - MAPWISEly (new grant)
- LU-WISE Lunches
 - September 6- Welcome, what is ADVANCE & resources, semester planning
 - September 14- Navigating Politics & Power
 - October 11- with Men allies & Advocates welcoming candidates to campus,
 - Week of October 23rd Ada Lovelace day/Chemistry Mole Day independent activity
 - November 15- What our Department Chairs Need to Know
 - December 11- metooSTEM & bystander intervention strategies
 - January 24: Outcomes from service summit
 - February 22: Race in STEM, ADVANCE & FSCN
 - March 2- Women as Experts in the Media (TBC)
 - April 19- Out in STEM (TBC)
 - May 10- Success & Challenges with Team Scholarship/ AY wrap up

- Men Allies & Advocates
 - Statement on Bias in SETs
 - Statement against sexual harassment
- Supports Institutional Memberships:
 - National Center for Faculty Development & Diversity
<https://www.facultydiversity.org/-->
 - AWIS Institutional Partner (webinars, research, etc.)
- Leadership Series for women staff & faculty with CGE
- Funding for women STEM faculty
 - Collaborations
 - Leadership development
 - Diversify colloquia @ Lehigh
- Summit on Transforming Culture of Faculty Service & Engagement – November 6-8, @Lehigh (faculty.service.lehigh.edu)
- Department Chairs/Department Climate
 - Consultations
 - Workshops
- Partner with VPEC on Inclusive Teaching-Workshop January